

Background Paper for Discussions on Global Platform on Waste Management (GPWM)

I. Background and mandate

UNEP Government Council decision (**GC 25/8**) on Waste Management acknowledges the role of UNEP and its International Environmental Technology Centre (IETC) of Division of Technology, Industry and Economics (DTIE) and requests the Executive Director UNEP to provide further assistance to developing countries in their efforts to strengthen national implementation of an Integrated Waste Management (IWM) approach, to support the implementation of the actions in the **Bali Declaration on Waste Management for Human Health and Livelihood**, to invite international organisations and governments and members of the industry and business sector to provide resources and technical assistance including creating a conducive environment for facilitating investments in waste management, to strengthen support in the field of waste management in line with Bali Strategic Plan for Technology Support and Capacity Building, and to propose IWM as a key priority area for the UN “Delivering as one” initiative. It also calls upon Governments and other relevant stakeholders to strengthen public-private partnership and provide additional means for assisting developing countries. It invites all the relevant UN agencies such as UNDP and UN Habitat, international institutions and forums, and processes to consider further action. Furthermore Bali Declaration even confirms that the countries will further promote international, regional and inter-agency cooperation, coordination and planning. Moreover, UN Commission on Sustainable Development (CSD) has also agreed to undertake waste as one of the focus areas for CSD 18.

II. Coordinated efforts and focus areas

Implementation of these important decisions on waste management, including hazardous waste, requires coordinated efforts by the international agencies, governments, civil society and private sector. These efforts could be classified with respect to their focus area, geographical coverage, expected outcomes/impacts and actors involved. Waste management system requires coherent policy development and its implementation, financing, technology and infrastructure, and clear stakeholders roles and responsibilities.

Traditionally, at the local level, important efforts are made in terms of implementation of policy and regulations, providing waste collection and management service, generating funds to support the waste management system, and coordination among the stakeholders to improve the efficiency and effectiveness of the system. At the national level, the major efforts are focused on policy development, supporting the local government through subsidies and capacity building for the implementation of waste management system, and coordinating with bilateral and multilateral agencies. At the international level, the bilateral and multilateral agencies with a focus on waste management provide technical and financial support to

developing countries to improve waste management system at the national and local level.

Recently various new focus areas have been opened up in waste management. Some important focus areas are as follows:

Economic activities: Waste management is turning into a business and private sector, either directly or through public-private partnerships, is getting involved at various stages of waste management chain. The level of involvement varies in line with the local policies, size of private sector organization and type of the business within the waste management chain. The community enterprises are often involved at door-to-door collection system and primary recycling that includes sorting, cleaning and balling. These enterprises are also involved in small scale composting. Local private companies usually get involved in collection and transportation of waste and operation of transfer stations with or without material recovery facility. These companies also get engaged with medium level composting and recycling activities. Large businesses, including multinational companies, are involved with major investment avenues such as landfills, treatment of hazardous waste, incineration, and converting waste into material or energy source through different types of contracts such as built-operate-transfer or built-own-operate. Some of the big businesses may opt for controlling whole chain of waste management under franchise agreement.

Waste as a resource: The philosophy of waste management has further evolved from focusing on public health by collecting waste and environmental aspects by properly disposing of waste. The additional aspect is that waste is a resource and most of waste could be converted into a material and energy source. There are two major benefits out of this approach. On the first hand, the final waste volumes reduce substantially and that reduces the cost of waste management. On the other hand, recovered materials and energy brings back revenue to support the cost of waste management. This philosophy is the basis for 3R (reduce, reuse and recycle) approach in waste management.

Waste and Climate Change: Increasing challenges of climate change have brought focus on the linkages between waste and climate change. Green house gas (GHG) emissions from open dumps, landfills and open burning are considered to be substantial in amount. Furthermore, if methane is captured and waste is converted into an energy source, then this could replace the dependence on some of the fossil fuels and may result in substantial reduction of fossil fuels related GHG emissions. Therefore, the projects under clean development mechanism (CDM) are trying to bring waste management and converting waste into energy into its fold; thus, creating new investment opportunities.

Hazardous waste: Mainly due to rapid industrialization, urbanization and related healthcare facilities hazardous waste has become one of the important issues at local, national and international levels due to the rapid increase in hazardous waste and due to awareness and political will to tackle this issue on the top priority basis. However,

hazardous waste management requires technical and financial capacity as there are various different sources and types of hazardous waste such as industrial hazardous waste, healthcare hazardous waste, and urban agricultural hazardous waste. In addition, recently end-of-life equipment such as electrical and electronic waste has emerged as an important waste management challenge in most countries. The collection, treatment and disposal of hazardous waste could be beyond the traditional capacity of local governments managing municipal waste. Hence private sector needs to be involved and that could be done through creation of enabling environment focusing policies, financial mechanism and support.

Based on these recent focus areas, the roles and responsibilities as well as the policies/regulations, financing mechanisms, and technology and infrastructure has to be transformed accordingly. This transformation or capacity building of national and local partners including governments and private sector is being supported by various national, bilateral and multilateral agencies. Various agencies supporting capacity development on policy framework, financing mechanisms including public-private partnerships, and technology are undertaking various activities.

So far these efforts are scattered, uncoordinated and not sufficient to address the needs of countries especially developing countries. Keeping in view the demand for international support on waste management as reflected in GC Decision 25/8 and Bali Declaration by Basel Convention COP, these efforts required to be scaled up and coordinated. Scaling up of these efforts would require additional resources and efficient use of currently available financial resources. Hence coordination is a vital element as it can reduce the chance of duplicating the efforts and it will improve the confidence of bilateral and multilateral agencies to increase their participation. The coordination will also increase the exchange of experiences across countries and across private sector to further consolidate their partnerships at national and local level.

To facilitate the coordination and scaling up of the international support on waste management, UNEP and its administrated conventions may consider a coordination mechanism that could be in the form of a “Global Platform for Waste Management (GPWM)” with regional and national level sub platforms. The Platform, however, would not duplicate the different mandates already acquired by the various bodies, but rather to enhance and ensure coherence of these efforts.

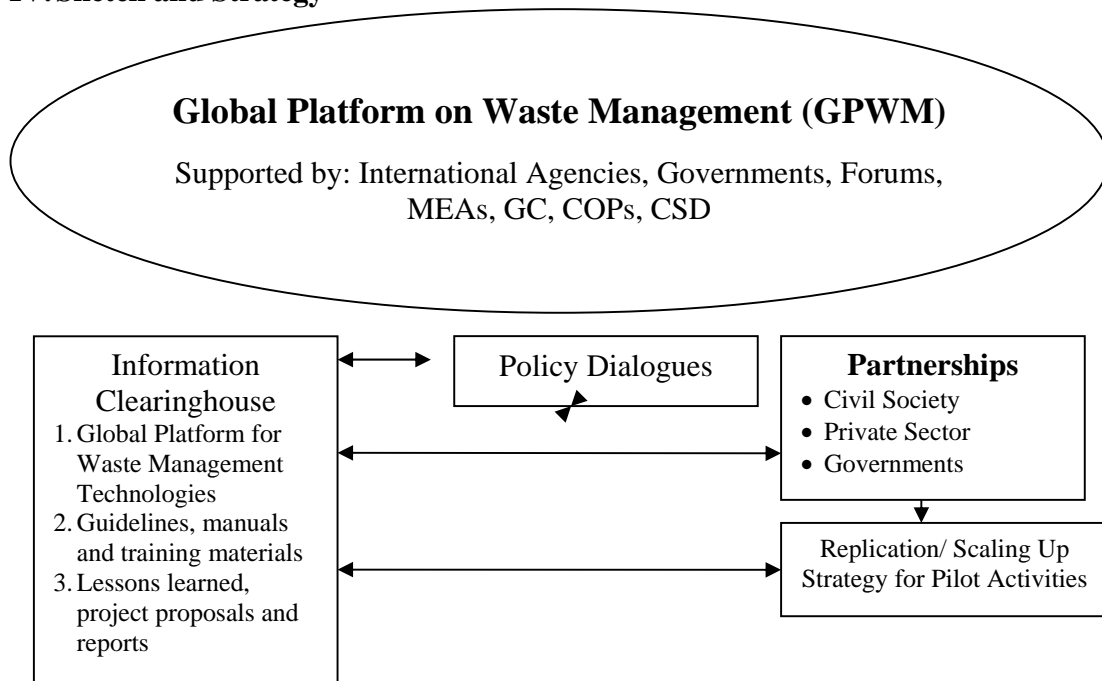
III. Objectives

This platform (GPWM) may target to achieve following objectives:

1. To **collect and disseminate knowledge and information** on all the aspects including technologies, financing, policies and stakeholders’ participation to manage all types of wastes such as municipal waste, industrial waste, healthcare waste, construction and demolition waste, sludge, hazardous waste, E-waste/WEEE and waste agricultural biomass. Also information sharing on awareness-raising, training, policy

- formulation, identification of environmentally sound technologies and project implementation
2. To **support and facilitate policy level dialogues** at all levels including global, regional, sub-regional, national and local
 3. To **facilitate building partnerships and cooperation** among various agencies and governments to optimise the impact of the support and efforts of international agencies and governments
 4. To **explore and facilitate the financing options** including public-private partnerships, foreign direct investment, international cooperation, and national and local financing mechanism
 5. To **support and facilitate the implementation** of multilateral environmental agreements (MEA) including their COP decisions/declarations, decisions taken by Governing Councils of various UN offices and programmes on waste management, and CSD18 for waste management
 6. To **promote replication and scaling of the activities** being conducted by the GPWM partners

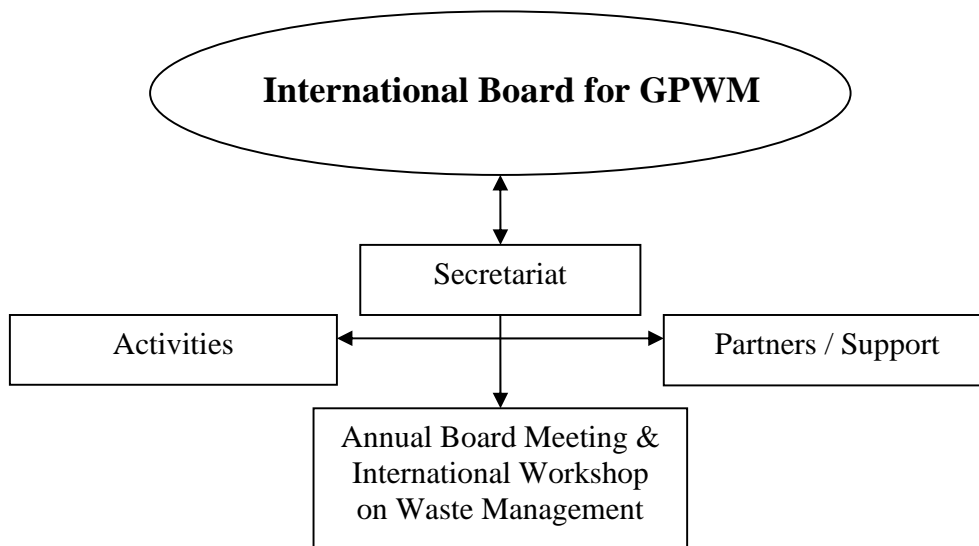
IV. Sketch and Strategy



The GPWM will be a Platform for international agencies, governments and various forums including inter-governmental, public-private, and non-governmental forums. There will be three major areas: Information Clearinghouse to collect and disseminate knowledge and to support other four areas, Policy Dialogues at international and national level among various stakeholders including MEA/GC/COP and CSD on range of issues related with waste management, and Partnerships to strengthen cooperation among all stakeholders (private sector, civil society, governments).

This Platform will be guided by a Board. Half of the members will be the representatives of major international (multilateral and bilateral) agencies working on waste and the other half of the members will be elected from the UN member countries. The board will be meeting annually during International Workshop on Waste Management.

UNEP-DTIE-IETC in close cooperation with Secretariat of Basel Convention will host the Secretariat for GPWM and will undertake the activities in collaboration with partners and in consultation with stakeholders. The collaborative partners will be required to provide in-cash and in-kind contributions to undertake the activities.



V. Coverage

The Secretariat in collaboration with all the stakeholders will support/undertake will promote following areas under GPWM

1. Partnerships

Overarching central thread for this GPWM is to promote partnerships and undertake all the activities in partnerships with all the actors including private sector, civil society and governments. The platform will also be utilized to facilitate and support the partnerships among international agencies, governments, MEAs, CSD and other stakeholders for implementation of policy, technologies and voluntary measures to improve the management of waste and to optimize the resource recovery from waste. To support the policy dialogues, capacity building, replication of pilot projects and support for implementation of MEAs, partnership with these actors is vital as ever evolving waste management systems in developing countries are bringing in private sector and civil society into their fold to raise the awareness, improve the financing situation through public-private partnerships, and to increase the management efficiency of the system. These

actors are also encouraged to build the partnerships among themselves as well to facilitate the implementation of waste management system at local and national level in respective cities and countries.

2. Information clearinghouse:

This information clearinghouse will not be a new database to replicate the information clearinghouses already available. However, this will develop the linkages and search facility to find the appropriate information from these existing clearinghouses. Furthermore, if some information is not available in the existing databases, then GPWM will support the compilation of information. In line with the focus and objectives of GPWM, the following areas for information sharing could be the starting point for this clearing house function:

2.1 Waste Management Technologies

Compendium of technologies for major waste streams including hazardous waste, municipal waste, waste biomass etc would be compiled or linked. The technologies would cover all the stages of waste management including source segregation, collection and transportation, transfer station, treatment and waste conversion into material and energy source and final disposal. Experiences of the technology use and lessons learned are considered as the vital information for the countries to identify appropriate technologies.

2.2 Regulations and financing mechanisms

Compendium of regulations, policies, and financing mechanisms would also be compiled or linked as many countries wish to learn from the experiences of other countries on how they develop and implement the policies and financing mechanisms and what the major barriers and strategies are to overcome these barriers.

2.3 Guidelines, manuals and training materials on

For capacity building of the policy makers and professionals, the most important aspect is to focus on the process of how to develop waste management system either as integrated solid waste management covering all the waste streams or for management of specific waste streams such as hazardous waste, E-waste, waste biomass, etc. One the most crucial elements are accurate data and information. Therefore, inventory of waste and stock of current management system (policies, institutions, financing mechanism, technology and infrastructure, and roles of stakeholders) is the foundation to develop a waste management system and plant. Thereafter, target setting process is quite important as that would lead to develop appropriate interventions under the management plan. Furthermore, the success of the implementation of the plan depends on the acceptance and participation of the stakeholders. Hence their concerns should also be kept in view of developing the plan. Once, interventions are identified and plan is developed, then its implementation strategy is developed to chalk out the ways and means including the financing and investment through various

avenues such as public-private partnerships and national/international support. There are various organizations and institutes conducting various training programmes and a partnership with these institutions should be fostered to avoid duplication of efforts and to make efficient use of the resources available. Training packages available or linked through information clearinghouse may cover the following areas:

- Waste inventory
- Assessment of current waste management and gaps therein
- Target setting
- Identification of stakeholders' issues of concern
- Development of "Plan" with "Implementation Strategy"

2.4 Lessons learned, project proposals and reports

The information clearinghouse will also be linked with the other agencies and institutions having a compilation of lessons learned, and project reports available. Lessons learned and project reports with respect to the development and implementation of waste management system could provide important information for policy dialogues, capacity building and replication of the pilot and demonstration projects

3. Policy dialogues

There are two aspects of policy dialogues. Firstly, the sub-regional, regional and international policy dialogues or consultations on how to implement the decisions such as GC 25/8 and what type of new decisions or agreements are required. Secondly, the policies required to implement waste management at national and local level by learning from each other's experience. GPWM may not necessarily organize all the policy dialogues, but may support international and other agencies in organizing and facilitating these dialogues.

4. Replication strategy for demonstration projects

In consultation with partners and stakeholder, develop and facilitate the implementation of replication strategies for demonstration or pilot projects. This strategy would also be part of the policy dialogues.

5. Contributions to MEAs, GC, COPs and CSD

This platform will also assist the international agencies responsible for implementation of MEAs, GC decisions, COP declaration, and CSD for waste related activities including hazardous waste. This assistance will be in the form of above areas such as facilitating partnerships, policy dialogues and replication of pilot and demonstration activities. The starting point for the assistance will be the contributions for:

- MEAs (Basel Convention, Stockholm Convention, Rotterdam Convention, Vienna Convention, etc.)

- UNEP GC 24 decision on six thematic areas and GC/25 decision on waste management through POW 2010-11, 2012-13 and 2014-15
- CSD 18 with particular focus areas on waste and chemicals